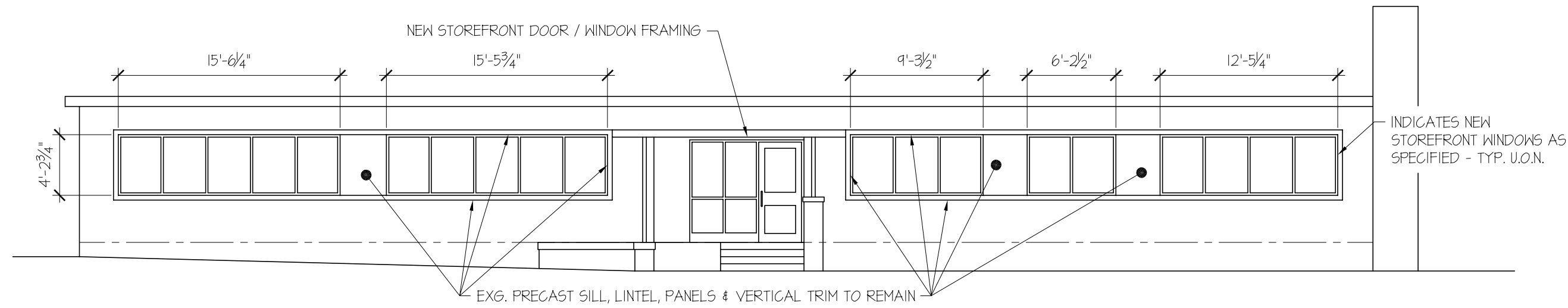
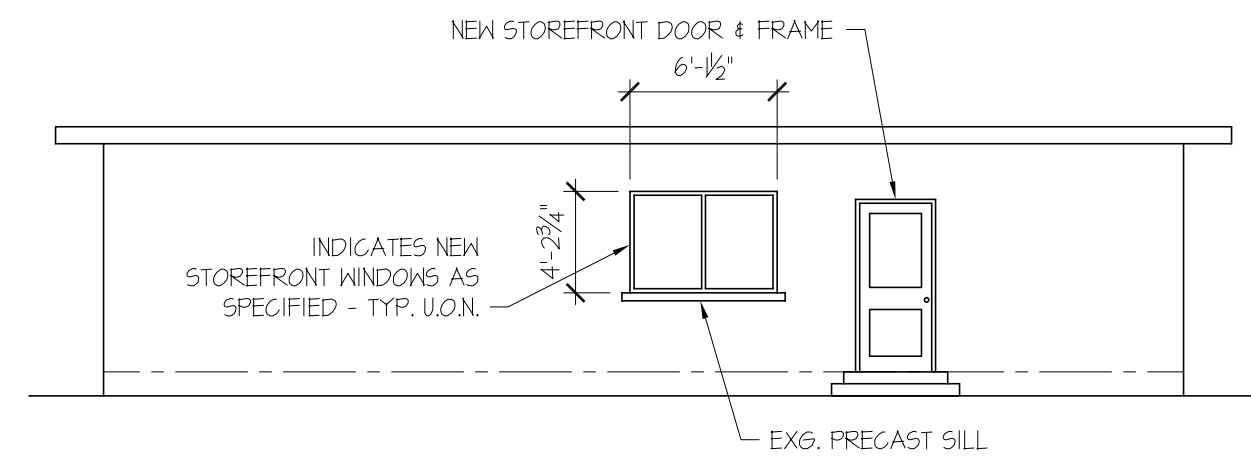


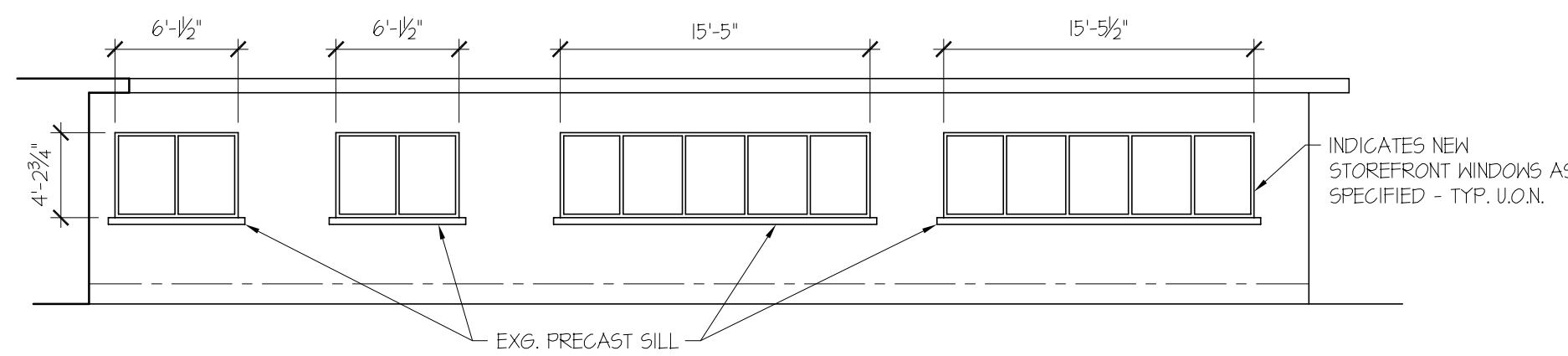
1 BUILDING 558 NORTH ELEVATION  
1/8" = 1'-0"



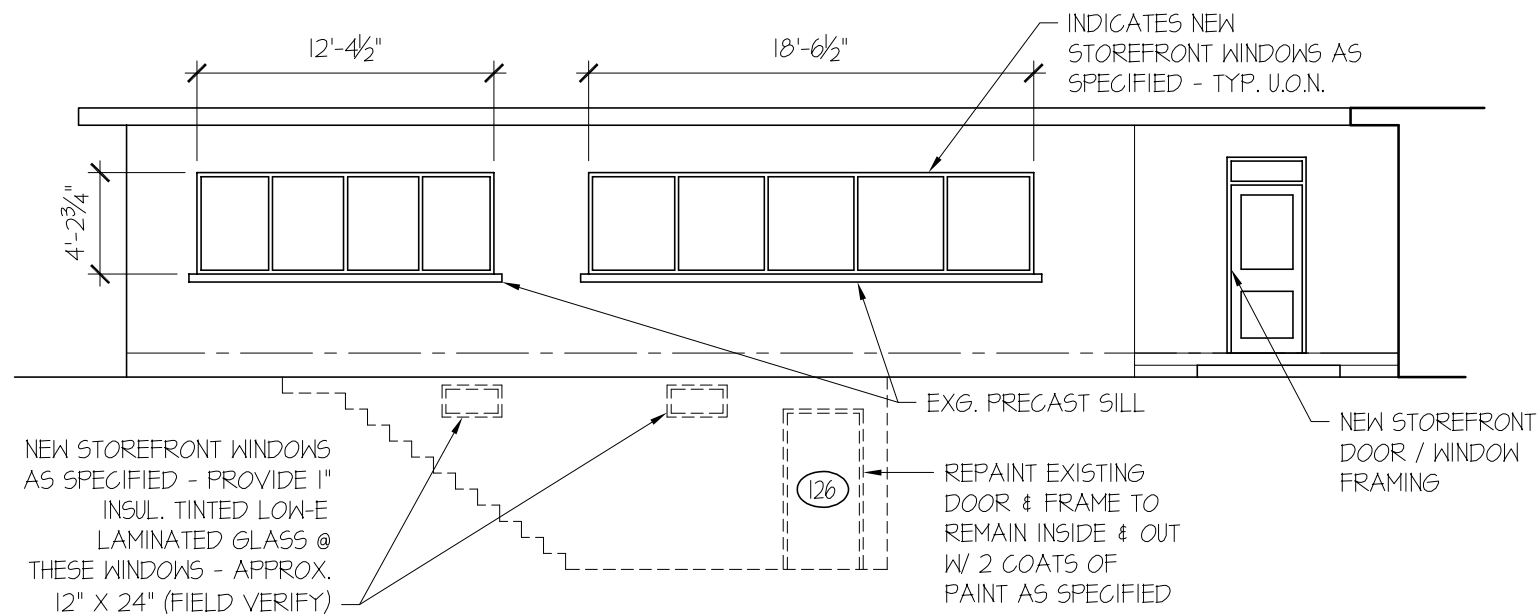
2 BUILDING 558 EAST ELEVATION  
1/8" = 1'-0"



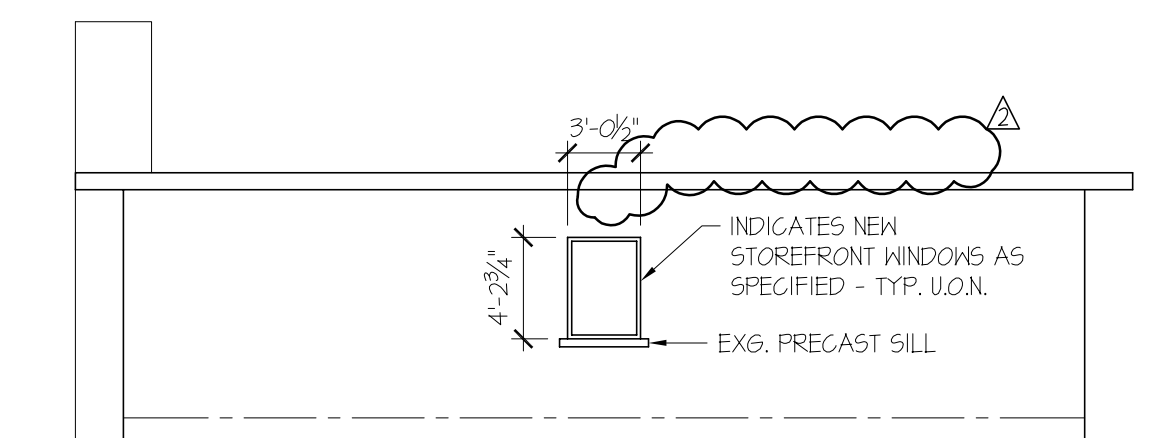
3 BUILDING 558 SOUTH ELEVATION  
1/8" = 1'-0"



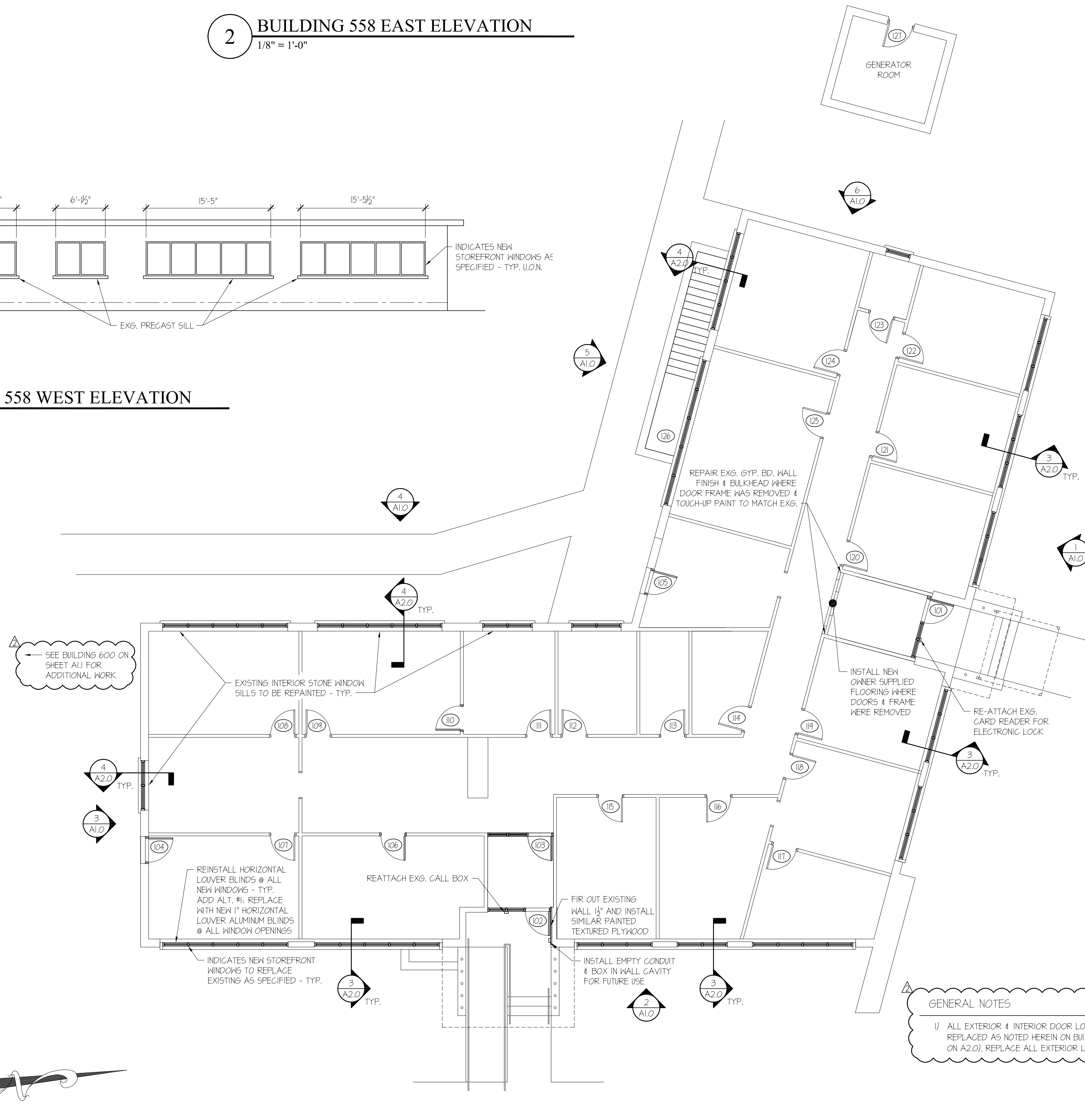
4 BUILDING 558 WEST ELEVATION  
1/8" = 1'-0"



5 BUILDING 558 SOUTH ELEVATION  
1/8" = 1'-0"



6 BUILDING 558 WEST ELEVATION  
1/8" = 1'-0"



7 BUILDING 558 FLOOR PLAN  
1/8" = 1'-0"

GENERAL NOTES

1) ALL EXTERIOR & INTERIOR DOOR LOCKSET HARDWARE TO BE REPLACED AS NOTED HEREIN ON BUILDING 558 (SEE DOOR DETAILS ON A2.0). REPLACE ALL EXTERIOR LOCKSETS ONLY ON BUILDING 600.